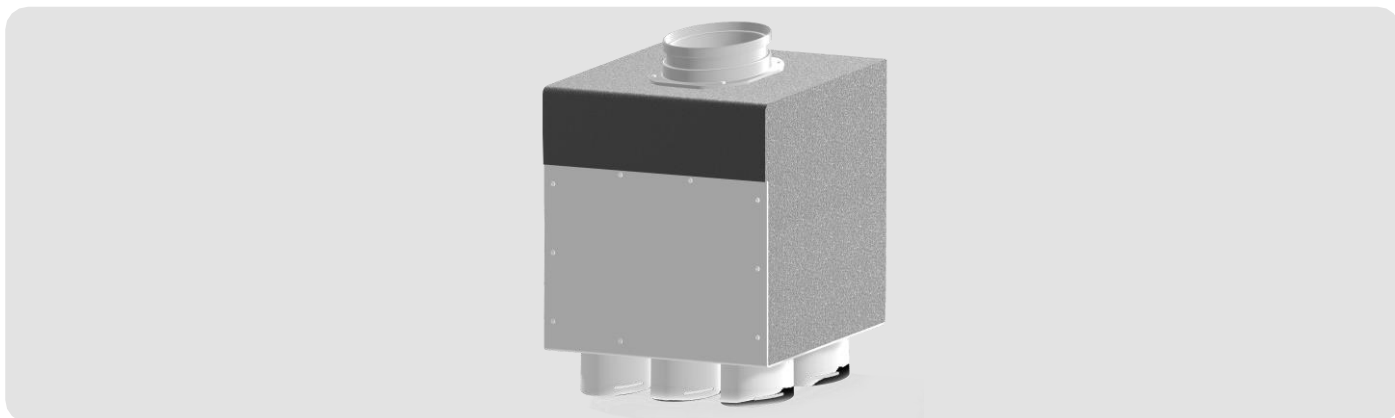


# SMART MEDIUM distribution box in sheet metal - PVC

---

## SMART MEDIUM SHEET METAL-PVC DISTRIBUTION BOX

---




---

## CARATTERISTICHE

---

Box for distributing fresh air to habitable rooms or extracting exhausted air from humid rooms. The boxes have a main connection, with multiple diameters (Ø125 to Ø160 and Ø160 to Ø180) varying from model to model, to connect to the unit ventilation via a rigid or flexible duct (possibly with the interposition of a silencer, not supplied).

They are equipped with connections to Ø75 or Ø90 round semi-rigid piping for distribution to the various rooms.

They are built on each of the two sides with provision for the possible addition of a PVC plate (see accessories below).

### Materials of construction:

Galvanized steel plate 1 mm thick for the body of all boxes; (the L-shaped plate with Ø75 or Ø90 connections is made of anti-condensation PVC thick. 4 mm).

The Ø75 and Ø90 connections are made with FITT Agix "GREY" threaded PP collars.

The main connection is made with a PVC collar equipped with a double gasket and fixed with screws; a PE strip is included to switch to Ø160 and Ø180, respectively.

### Outer coating:

With 6 mm thick polyethylene foam insulation (the L-shaped plate is not coated).

### Partial inner lining (on 1 side):

With 10mm thick polyester fiber coated with air duct film.

### Fixing methods:

Fixable to the wall or ceiling. They are complete with no. 4 adjustable "L" brackets for fixing, including self-tapping screws for fixing them on the box.

### Operating temperature:

-50 ÷ 60°C.

### Reversibility of attachments:

as standard, the Ø75 (or Ø90) couplings are single-sided; they are reversible, being possible, simply by unscrewing the PVC L-plate that supports them by reversing the position of the plate and refixing it, to take the couplings from AXIAL [as standard] to LATERAL and vice versa.

---

## ACCESSORIES (optional)

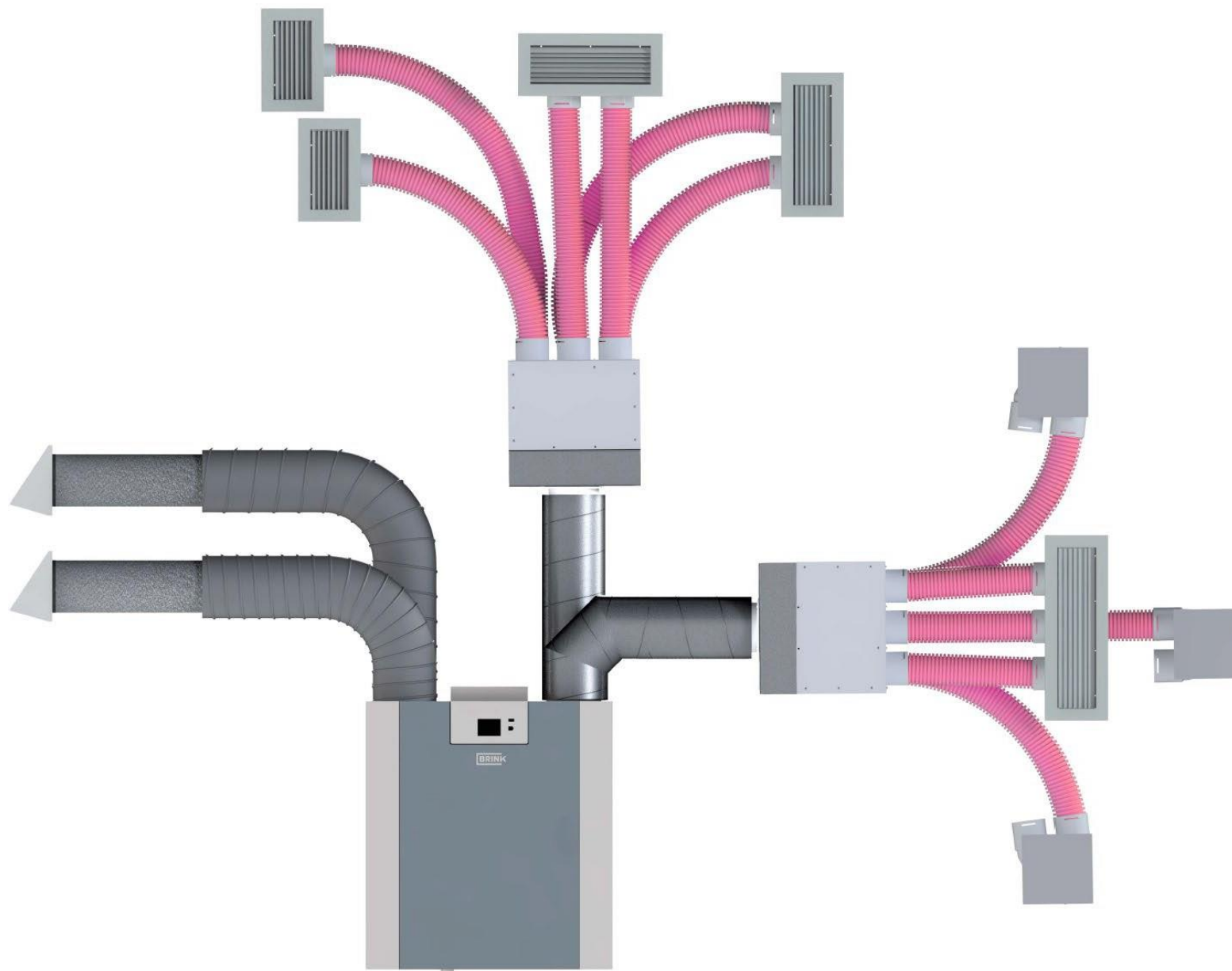
---

- PVC plate with no.2 additional collars Ø75 "Grey" cod. VMSMPL275

- PVC plate with no.2 additional collars Ø90 "Grey" cod. VMSMPL290

For other accessories (particularly of the GREY collars and piping) see the relevant data sheets.

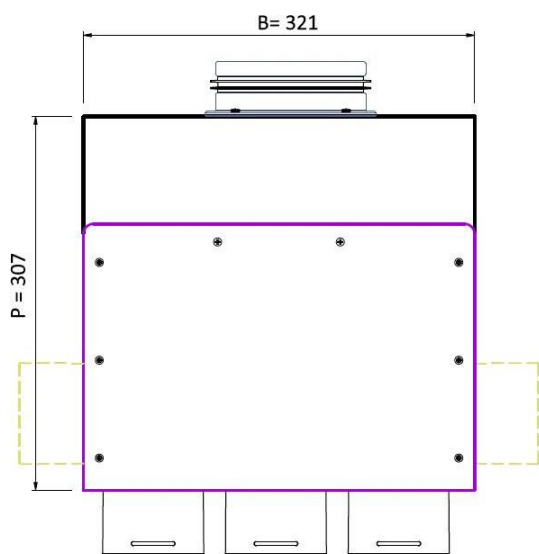
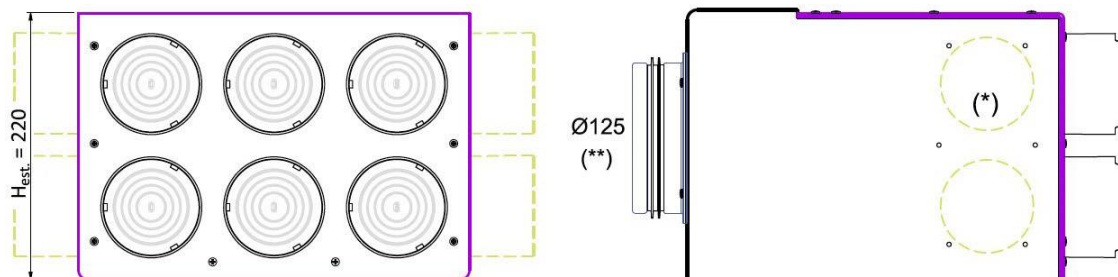
---



Example of installation of two SMART Medium boxes for VMC (one for supply and one for extraction) associated with a Flair series heat recovery unit

## DIMENSIONS

Distribution box mod. smart Medium with  $\varnothing 75$  distribution connections - cod. VMSMM1216675  
 In the drawing below it is with n. 6 distribution couplings in AXIAL position and any 2 + 2 couplings on the two sides

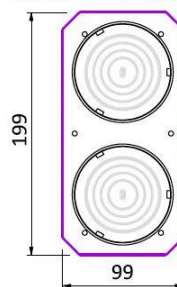


N. 6 collarini Grey  $\varnothing 75$

### NOTE.

-Le misure sono esterne e sono comprensive dello spessore del rivestimento in PE espanso adesivo di spessore 6 mm.

(\*) Predisposizione, sia su questa faccia che sulla faccia opposta, per installazione (eventuale) della placca in PVC a due collarini aggiuntivi. La predisposizione è realizzata mediante pretranciatura/preforatura lamiera e segni di taglio nel rivestimento.

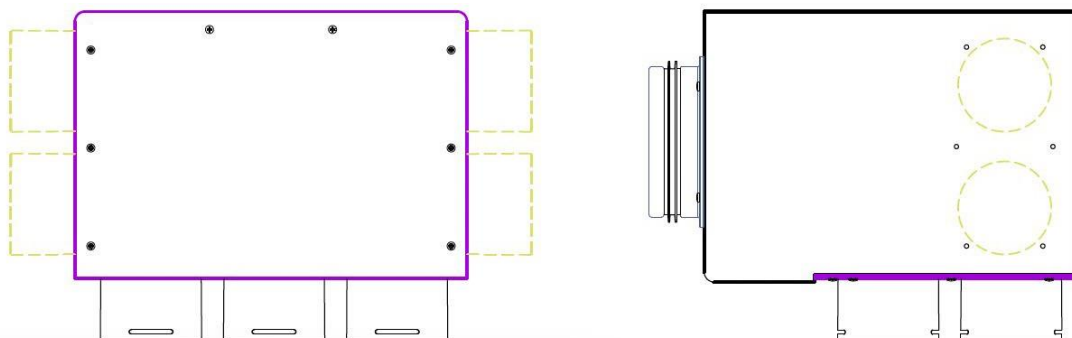


[ placca cod. VMSMPL275 ]

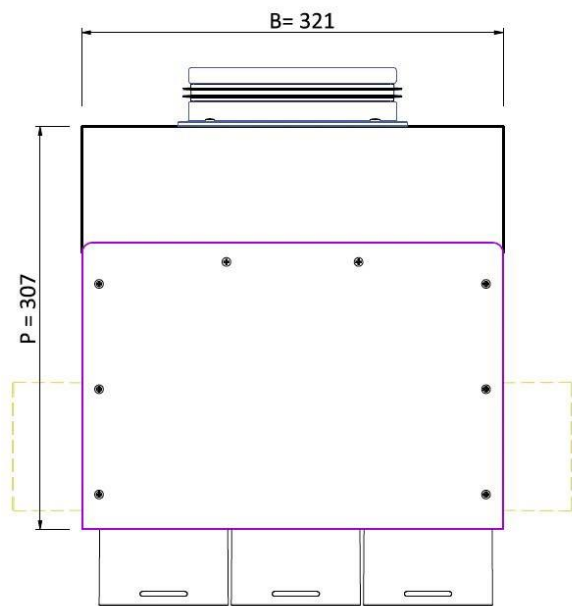
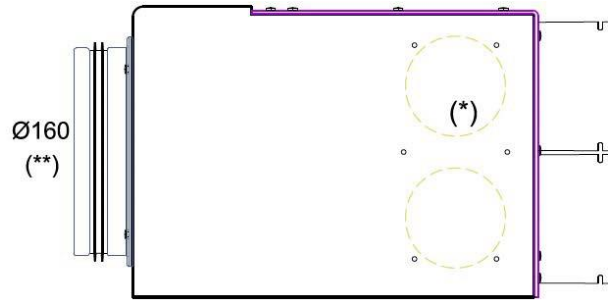
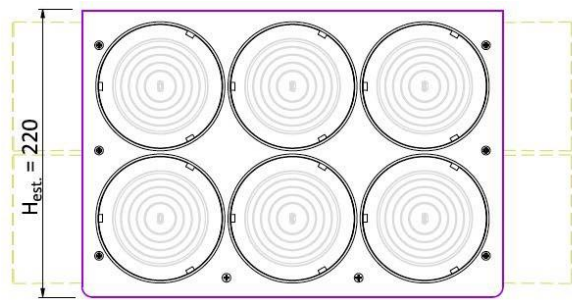
Placca in PVC sp.3, opzionale, con relative viti. I due collarini  $\varnothing 75$  sono avvitati sulla placca (e su piastra). I collarini vanno svitati dalla placca per potere ben fissare al box con viti, di cui 4 sotto la base del collarino.

(\*\*) Oltre al collare in PVC  $\varnothing 125$  viene fornito di serie un anello in EPE (Polietilene Esp. semirigido) per eventuale aumento a  $\varnothing 160$ .

Distribution box mod. smart Medium with  $\varnothing 75$  distribution connections - cod. VMSMM1216675  
 In the drawing below it is with n. 6 distribution couplings in the SIDE position and any 2 + 2 couplings on the two sides



Distribution box mod. smart Medium with  $\varnothing 90$  distribution connections - cod. VMSMM1618690  
 In the drawing below it is with n. 6 distribution couplings on the REAR face and any 2 + 2 couplings on the two sides

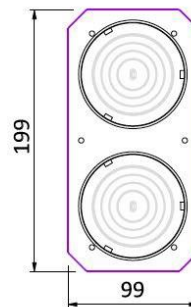


N. 6 collarini Grey  $\varnothing 90$

NOTE.

-Le misure sono esterne e sono comprensive dello spessore del rivestimento in PE espanso adesivo di spessore 6 mm.

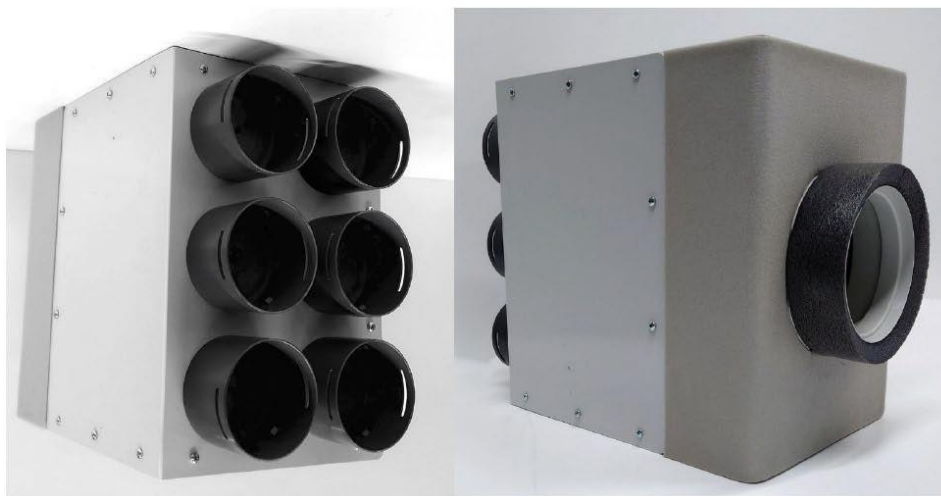
(\*) Predisposizione, sia su questa faccia che sulla faccia opposta, per installazione (eventuale) della placca in PVC a due collarini aggiuntivi. La predisposizione è realizzata mediante pretranciatura/preforatura lamiera e segni di taglio nel rivestimento.



[ placca cod. VMSMPL290 ]

Placca in PVC sp.3, opzionale, con relative viti. I due collarini  $\varnothing 90$  sono avvitati sulla placca (e su piastra). I collarini vanno svitati dalla placca per potere ben fissare al box con viti, di cui 4 sotto la base del collarino.

(\*\*) Oltre al collare in PVC  $\varnothing 160$  viene fornita di serie una striscia in PE espanso per eventuale aumento a  $\varnothing 180$ .



---



---

**SMART Medium BOX QUICK CHOICE TABLES.**


---

Code box	Diam. attack unit side of ventilation*	N. collars by distribution. OF SERIES	Ext. diameter. tube semi-rigid	Type of collar of attack **	Max Scope of the with collars OF SERIES (m <sup>3</sup> /h) ***	No.collars additional scope collars in optional	Max on with plate additional
VMSMM1216675	Ø125 / Ø160	6	Ø 75	Ø75 GREY	204	2 + 2	340
VMSMM1618690	Ø160 / Ø180	6	Ø 90	Ø90 GREY	288	2 + 2	480

\* The connection is made with PVC collar (with gasket) in the smaller diameter of the two.

\*\* For GREY collars (Ø75 and Ø90), there is no need for any plug for unused attachments as these collars have an internal septum for total closure (to be removed in place). The inner septum is (always in place, easily) sectionable into sectors: the GREY collars also function as flow regulators. Additional collars (OPTIONAL) can possibly be Ø90 in diameter even if the remaining collars are Ø75, and vice versa, as the PVC collar holder plate is unique for the two diameters.

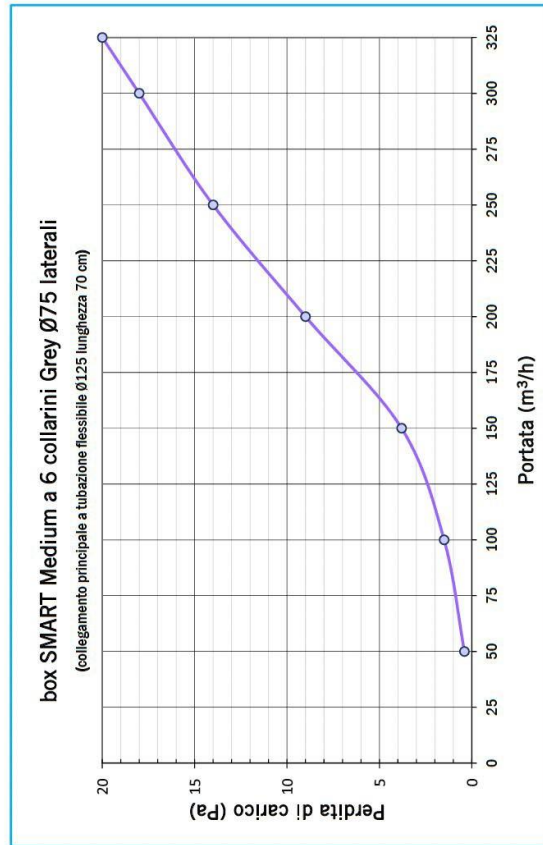
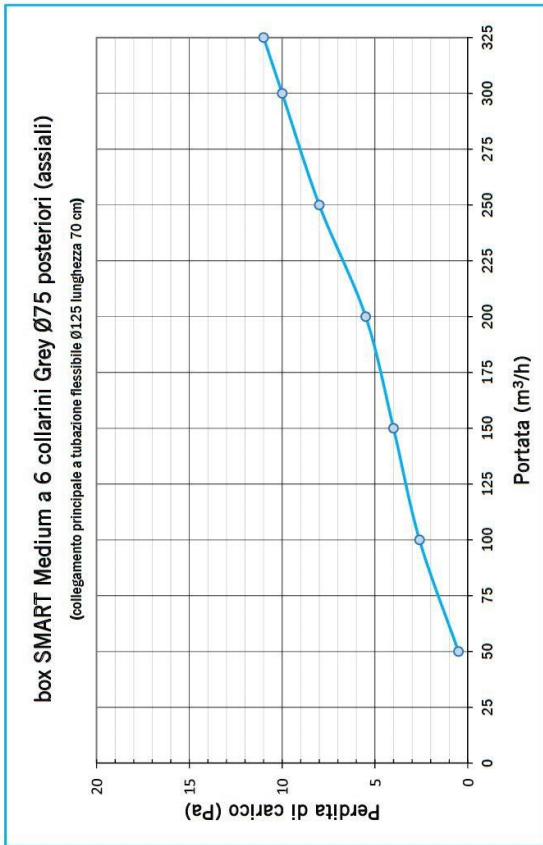
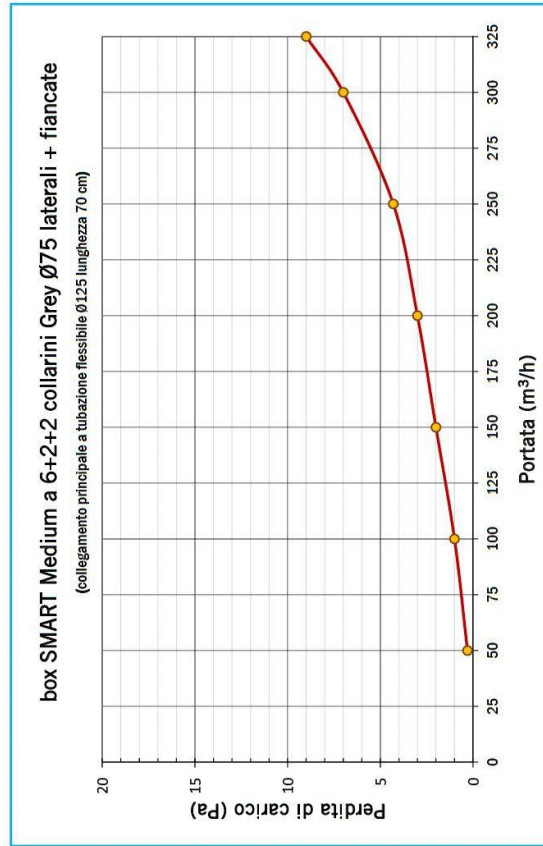
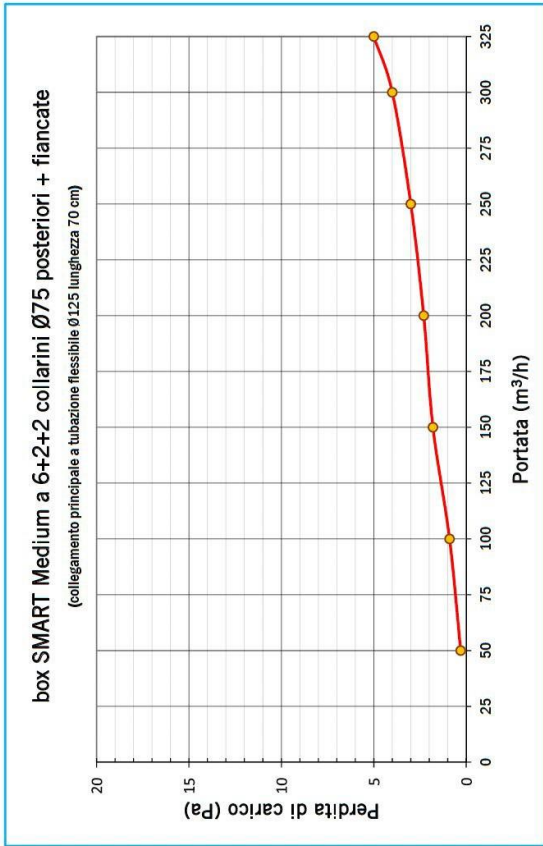
\*\*\* Flow rate calculated based on the air flow rate of each distribution pipe for a velocity (max) of 3 m/s in each pipe or based on the max. flow rate of the main pipe.

---

GRAPHI

Pressure drop graphs of the SMART Medium box mod. VMSMM12\_675

(the "+ 2 collars" graphs refer to boxes with the addition of VMSMPL275 plate; in the total  $\Delta p$  (the section of flexible pipe  $\varnothing 125$  is included)



Pressure drop graphs of SMART Medium boxes mod. VMSMM16\_690  
 (the “+ 2 collars” graphs refer to boxes with the addition of VMSMPL290 plate; in the total  $\Delta p$  (the Ø160 flexible hose section is included)

